

City of Tempe - Crime Trend Report

Crime Every 28 Days

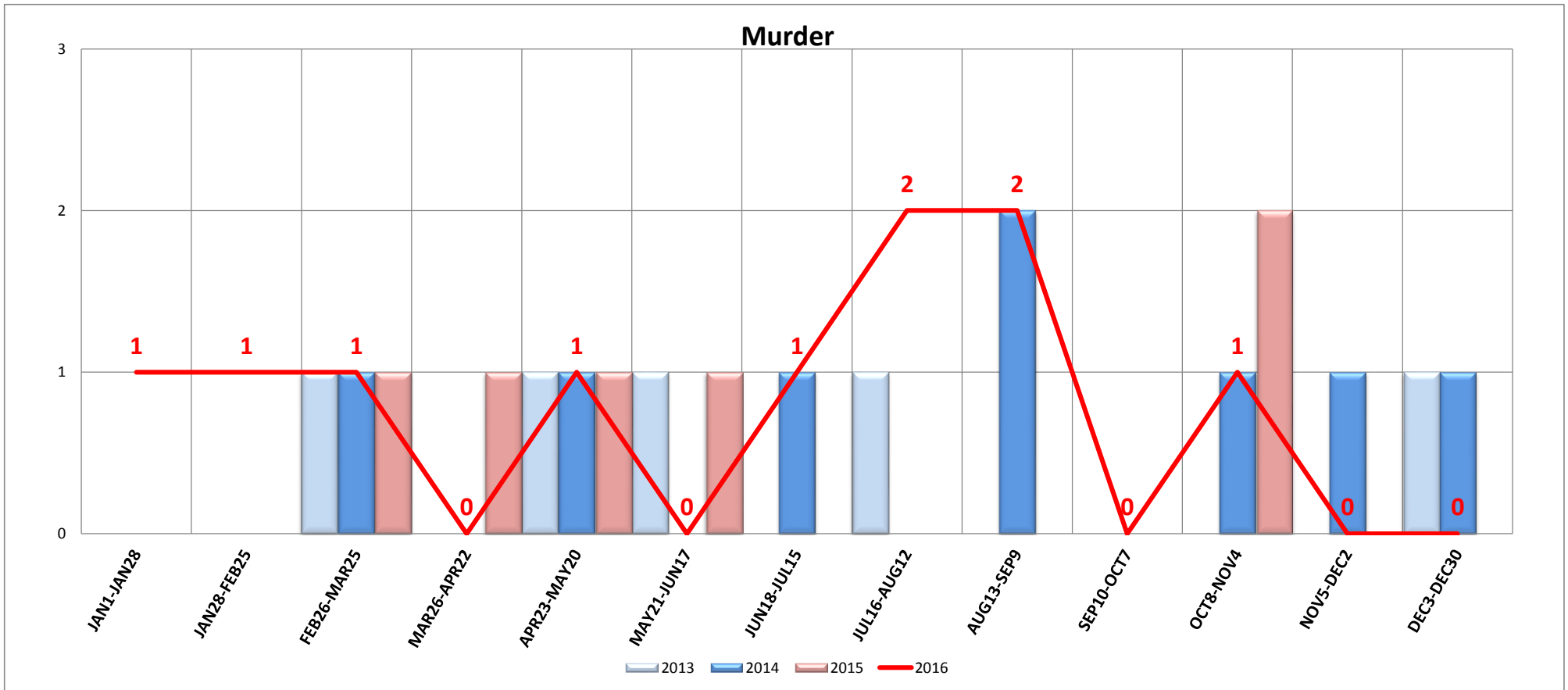
AVG	CITYWIDE	28 Day - Crime Cycle														YTD		
+ 1 SD	CRIMETYPE	OCCYR	JAN1 - JAN28	JAN28 - FEB25	FEB26 - MAR25	MAR26 - APR22	APR23 - MAY20	MAY21 - JUN17	JUN18 - JUL15	JUL16 - AUG12	AUG13 - SEP9	SEP10 - OCT7	OCT8 - NOV4	NOV5 - DEC2	DEC3 - DEC30	RED means significantly above normal & # > YTD-AVG		
																YTD	YTD-AVG +/-	PACE
0.6	MURDER <small>Manslaughter - Homicide</small>	2013	0	0	1	0	1	1	0	1	0	0	0	0	1	5	6.3	5
1.2		2014	0	0	1	0	1	0	1	0	2	0	1	1	1	8		8
		2015	0	0	1	1	1	1	0	0	0	0	2	0	0	6		6
		2016	1	1	1	0	1	0	1	2	2	0	1	0	0	10	3.7	10.0
7.5	RAPE	2013	5	5	8	6	4	4	3	5	6	7	5	5	4	67	84.3	67
10.7		2014	10	9	6	5	6	5	4	5	9	10	12	6	2	89		89
		2015	8	9	7	8	9	7	6	8	7	12	7	5	4	97		97
		2016	11	7	10	14	6	15	6	11	16	15	10	9	8	138	53.7	138.0
15.6	ROBBERY <small>Armed Robbery - Strong Armed Robbery</small>	2013	16	14	15	16	24	19	17	8	13	16	21	21	24	247	198.9	224
20.7		2014	11	9	10	13	9	20	22	11	7	15	12	7	16	162		162
		2015	18	5	10	15	17	11	23	7	14	25	12	10	21	188		188
		2016	18	14	17	13	21	18	21	22	22	21	14	19	18	238	39.1	238.0
18.7	NON-DV AGG ASSAULT	2013	26	14	14	25	19	16	15	18	24	13	11	15	28	238	235.0	238
23.5		2014	15	18	11	26	26	21	22	20	26	15	17	15	10	242		242
		2015	12	14	23	24	16	20	10	16	21	21	18	13	17	225		225
		2016	15	17	26	20	23	20	28	21	17	21	19	20	21	268	33.0	268.0
10.9	DV AGG ASSAULT <small>DV Agg Assault - Agg Assault Family Violence</small>	2013	10	7	7	10	20	13	9	12	14	13	13	6	6	154	145.4	140
14.1		2014	15	10	14	11	8	19	7	12	14	9	9	5	15	148		148
		2015	9	8	11	11	12	9	15	11	9	8	13	10	8	134		134
		2016	8	8	10	17	9	14	10	9	14	11	13	10	14	147	1.6	147.0
77.1	RES BURG-YARD <small>Res Burg - Res Burg from Yard</small>	2013	86	89	88	116	98	92	82	93	74	76	66	73	106	1139	1012.3	1139
90.1		2014	106	80	71	68	67	77	77	66	55	68	72	80	72	959		959
		2015	60	73	82	70	87	56	73	63	85	83	76	68	63	939		939
		2016	76	71	76	71	96	71	94	77	75	67	68	52	80	974	-38.3	974.0
25.7	NON-RES BURG-YARD <small>Non-Res Burg - Non-Res Burg from Yard</small>	2013	30	28	19	30	26	24	30	19	27	13	28	35	29	370	351.5	338
32.4		2014	26	25	20	23	24	34	36	27	19	26	49	15	27	351		351
		2015	32	12	30	22	15	28	25	24	17	23	37	39	29	333		333
		2016	26	23	19	22	23	28	30	23	16	27	22	25	30	314	-37.5	314.0
133.1	VEHICLE BURGLARY <small>Burg from Vehicle - Theft from Vehicle - Theft of License Plate - Theft of Vehicle parts</small>	2013	104	115	109	137	116	104	124	113	118	108	142	124	130	1544	1668.7	1544
155.4		2014	135	104	110	111	109	122	136	148	143	206	162	128	114	1728		1728
		2015	132	161	173	145	139	108	98	113	140	128	116	136	145	1734		1734
		2016	189	161	163	153	130	131	143	115	153	135	146	152	145	1916	247.3	1916.0
107.2	SHOPLIFT	2013	95	91	93	103	69	75	63	64	73	93	93	99	96	1107	1343.3	1107
127.6		2014	95	98	105	108	106	82	114	116	145	130	108	130	135	1472		1472
		2015	115	91	130	107	122	88	103	94	91	120	153	136	101	1451		1451
		2016	135	119	121	126	118	128	108	118	130	124	82	117	117	1543	199.7	1543.0
47.7	THEFT OF BICYCLE	2013	38	64	45	39	59	55	31	47	60	71	73	64	56	702	630.3	702
59.4		2014	72	40	50	61	52	32	41	25	40	65	58	52	51	639		639
		2015	42	39	52	33	43	38	30	39	35	41	67	54	37	550		550
		2016	44	29	46	47	50	46	35	43	56	60	48	42	41	587	-43.3	587.0
36.0	MOTOR VEHICLE THEFT <small>Motor Vehicle or Trailer Theft</small>	2013	43	41	32	43	53	31	32	24	47	29	41	50	46	512	467.7	512
44.5		2014	34	24	23	27	34	55	41	32	27	42	48	49	28	464		464
		2015	23	26	21	35	41	20	26	34	37	43	43	37	41	427		427
		2016	42	32	29	31	36	37	37	29	49	41	37	36	33	469	1.3	469.0

City of Tempe - Crime Trend Report

Crime Every 28 Days

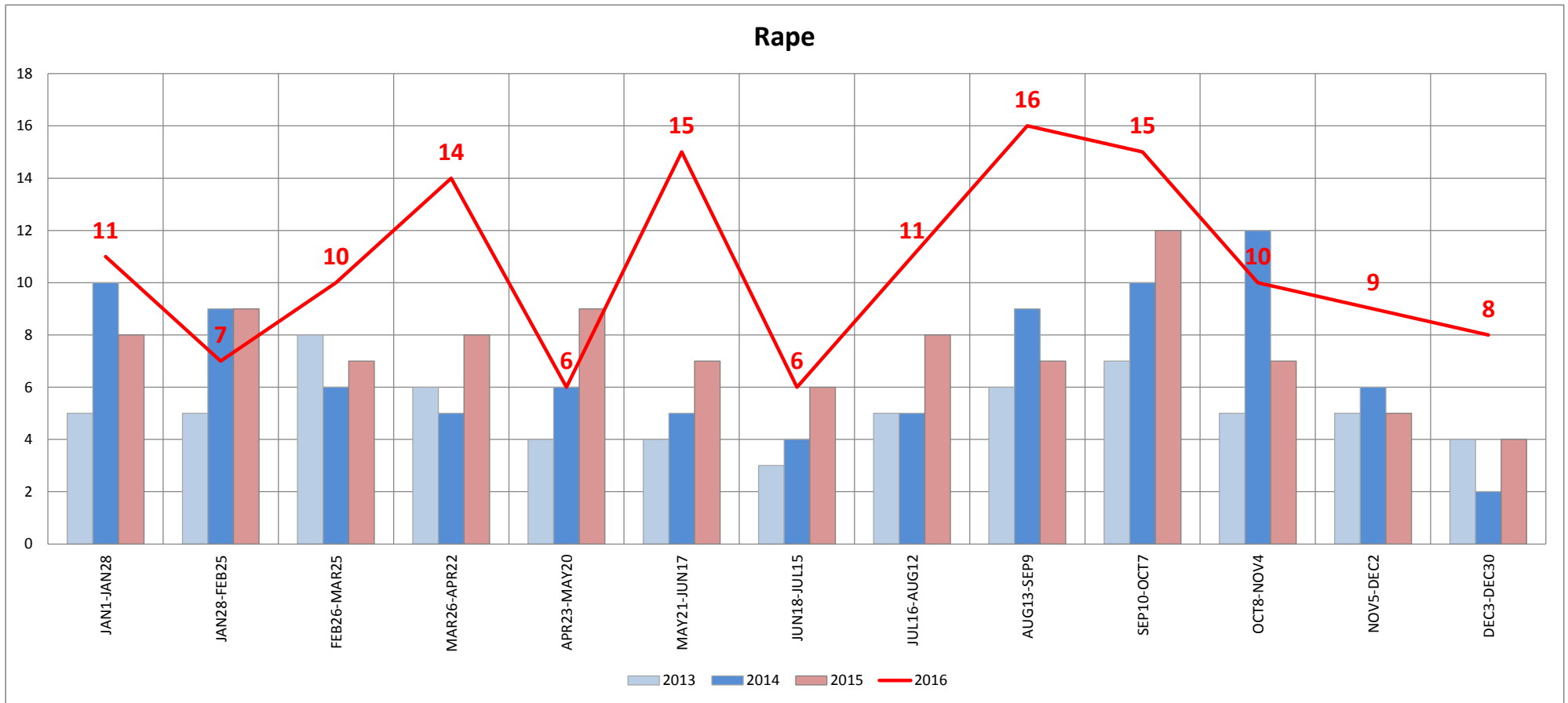
AVG	CITYWIDE	28 Day - Crime Cycle														YTD		
+ 1 SD	CRIMETYPE	OCCYR	JAN1 - JAN28	JAN28 - FEB25	FEB26 - MAR25	MAR26 - APR22	APR23 - MAY20	MAY21 - JUN17	JUN18 - JUL15	JUL16 - AUG12	AUG13 - SEP9	SEP10 - OCT7	OCT8 - NOV4	NOV5 - DEC2	DEC3 - DEC30	RED means significantly above normal & # > YTD-AVG		
																YTD	YTD-AVG +/-	PACE
3.3	ARSON Arson Mobile - Other Property - Structure	2013	2	5	3	2	2	1	6	1	4	1	2	2	5	36	46.0	36
5.6		2014	2	1	3	7	7	3	0	3	3	3	1	3	2	38		38
		2015	4	3	1	7	10	3	4	8	8	9	3	3	1	64		64
		2016	1	4	2	2	2	5	7	3	2	3	2	1	0	34		-12.0
79.2	NON-DV ASSAULT	2013	83	83	64	71	88	67	88	53	73	83	89	69	63	974	1009.7	974
91.8		2014	61	89	70	88	85	76	80	68	77	87	90	61	69	1001		1001
		2015	64	69	79	84	86	81	71	77	83	125	93	83	59	1054		1054
		2016	79	80	99	88	94	76	76	75	83	95	99	86	58	1088		78.3
78.5	DV ASSAULT Family Violence	2013	59	64	82	86	78	89	58	68	84	72	85	68	69	962	1018.0	962
89.5		2014	86	85	93	87	88	110	78	80	92	84	86	54	80	1103		1103
		2015	79	74	71	85	64	81	77	75	84	74	79	78	68	989		989
		2016	85	81	80	85	86	83	98	52	95	70	78	68	69	1030		12.0
146.5	CRIMINAL DAMAGE Agg Criminal Damage - Criminal Damage - Criminal Damage Vehicle	2013	143	173	150	160	152	151	158	172	175	143	159	142	154	2032	1930.7	2032
161.2		2014	135	147	156	152	151	159	148	124	147	171	167	136	135	1928		1928
		2015	146	148	157	153	134	136	136	119	139	134	159	127	144	1832		1832
		2016	124	162	134	153	161	124	123	108	145	133	151	143	165	1826		-104.7
51.6	TRESPASS	2013	46	57	61	53	48	51	55	51	51	35	57	49	54	668	661.0	668
59.9		2014	56	52	38	56	51	31	38	46	54	51	45	43	55	616		616
		2015	56	49	41	41	49	46	55	51	58	66	71	51	65	699		699
		2016	43	47	53	63	69	49	52	47	46	68	50	64	47	698		37.0
13.1	UNLAWFUL SEXUAL BEHAVIOR Indecent Exposure, Other Sex Offense, Pornography, Prostitution, Public Sex Indecency, Sex Abuse, Peeping Tom, Surreptitious Viewing	2013	6	10	13	11	14	13	15	15	12	13	8	21	7	158	172.3	158
18.4		2014	9	14	9	19	8	15	34	13	18	22	21	13	9	204		204
		2015	11	12	15	12	9	12	13	17	19	18	5	9	3	155		155
		2016	15	18	9	12	20	19	10	6	11	17	11	7	7	162		-10.3
389.3	ACCIDENTS Fatality - Hit and Run - Injury - No Injury	2013	315	379	402	373	350	300	263	298	384	379	436	341	323	4543	4901.3	4543
450.1		2014	318	373	436	399	375	322	280	307	371	378	459	408	358	4784		4784
		2015	368	467	454	421	459	347	351	336	412	455	469	468	370	5377		5377
		2016	427	456	471	452	430	330	323	383	483	489	501	460	337	5542		640.7
90.5	DUI Aggravated - Drugs - Liquor	2013	116	70	87	62	104	112	102	99	170	110	100	99	129	1360	1266.0	1360
112.3		2014	101	105	105	93	114	92	115	77	119	94	88	82	112	1297		1297
		2015	108	99	98	67	88	68	96	76	106	76	75	86	98	1141		1141
		2016	80	81	67	52	70	89	70	77	81	50	79	43	69	908		-358.0
4.7	AGGRAVATED ASSAULT-POLICE OFC (RMS)	2013	8	5	8	4	3	6	6	11	1	10	2	1	3	68	60.7	68
7.2		2014	4	3		2	3	4	2	5	3	4	8	2	3	43		43
		2015	3	7	4	3	7	8	6	6	10	5	4	3	5	71		71.0
		2016	2	6	5	2	5	1	9	5	4	7	4	5	5	60		-0.7

City of Tempe - Citywide Murder Trends



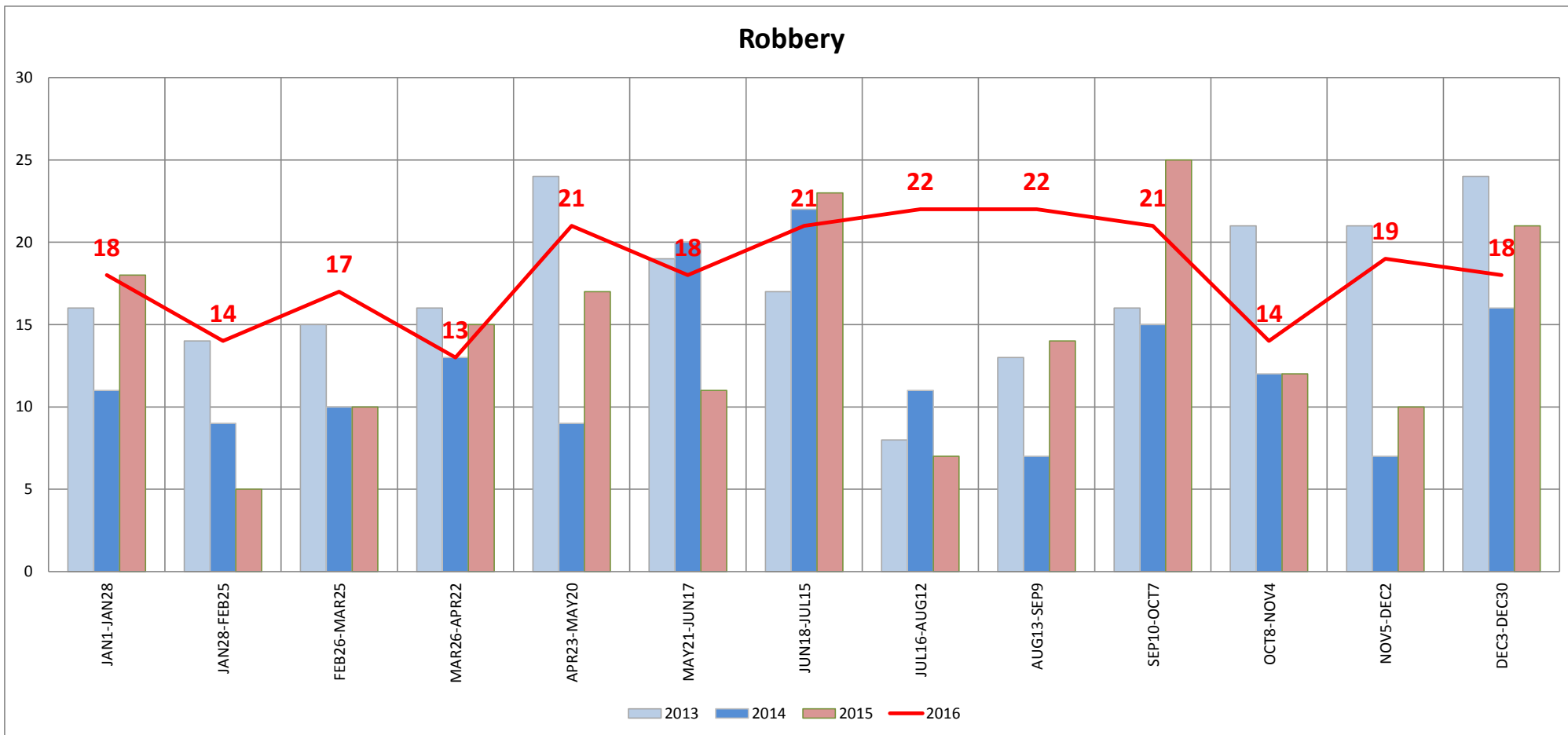
AVG	0.6	ACTION
+1 S.D.	1.2	Above this number = Action
		Trending Up = Action
		YTD above previous = Action

City of Tempe - Citywide Rape Trends



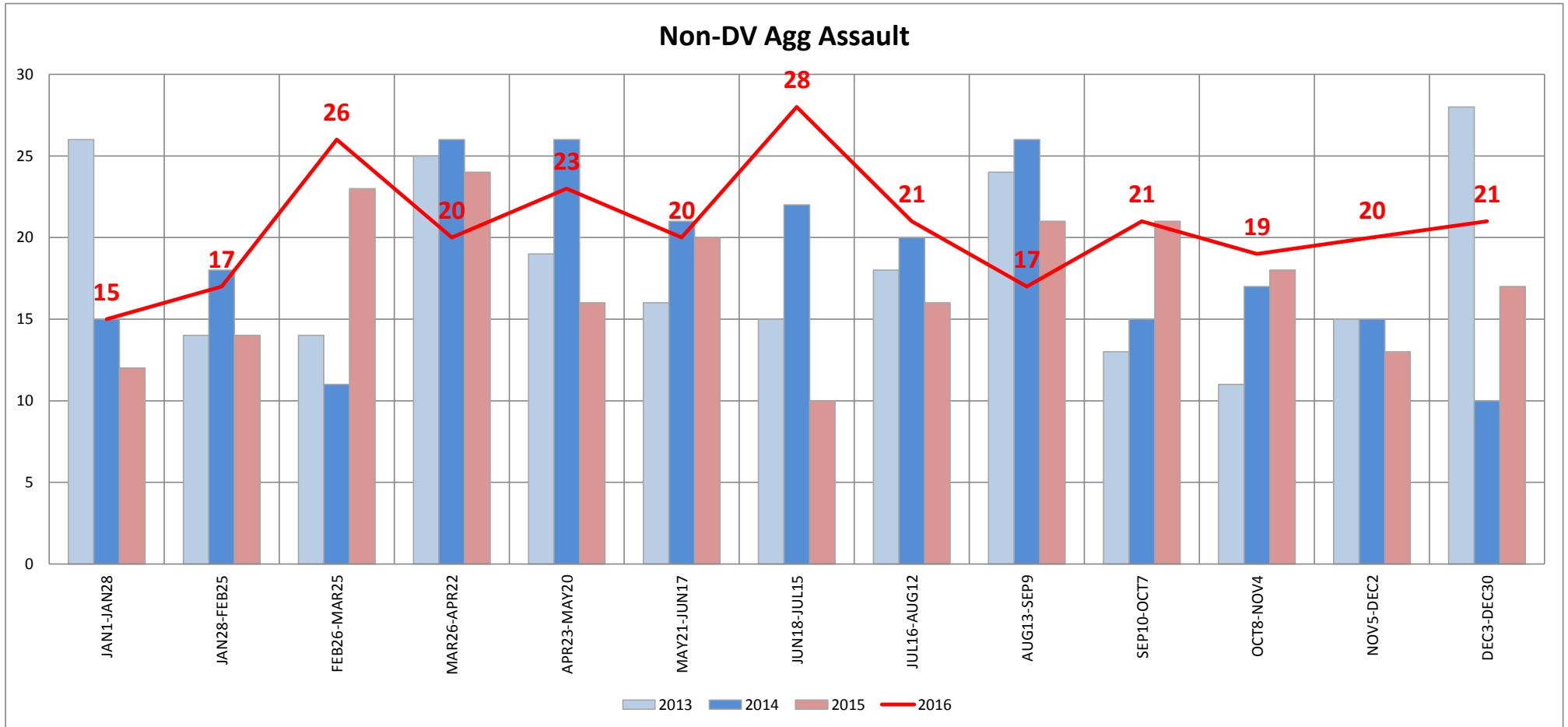
AVG	7.5	ACTION
+1 S.D.	10.7	Above this number = Action
		Trending Up = Action
		YTD above previous = Action

City of Tempe - Citywide Robbery Trends



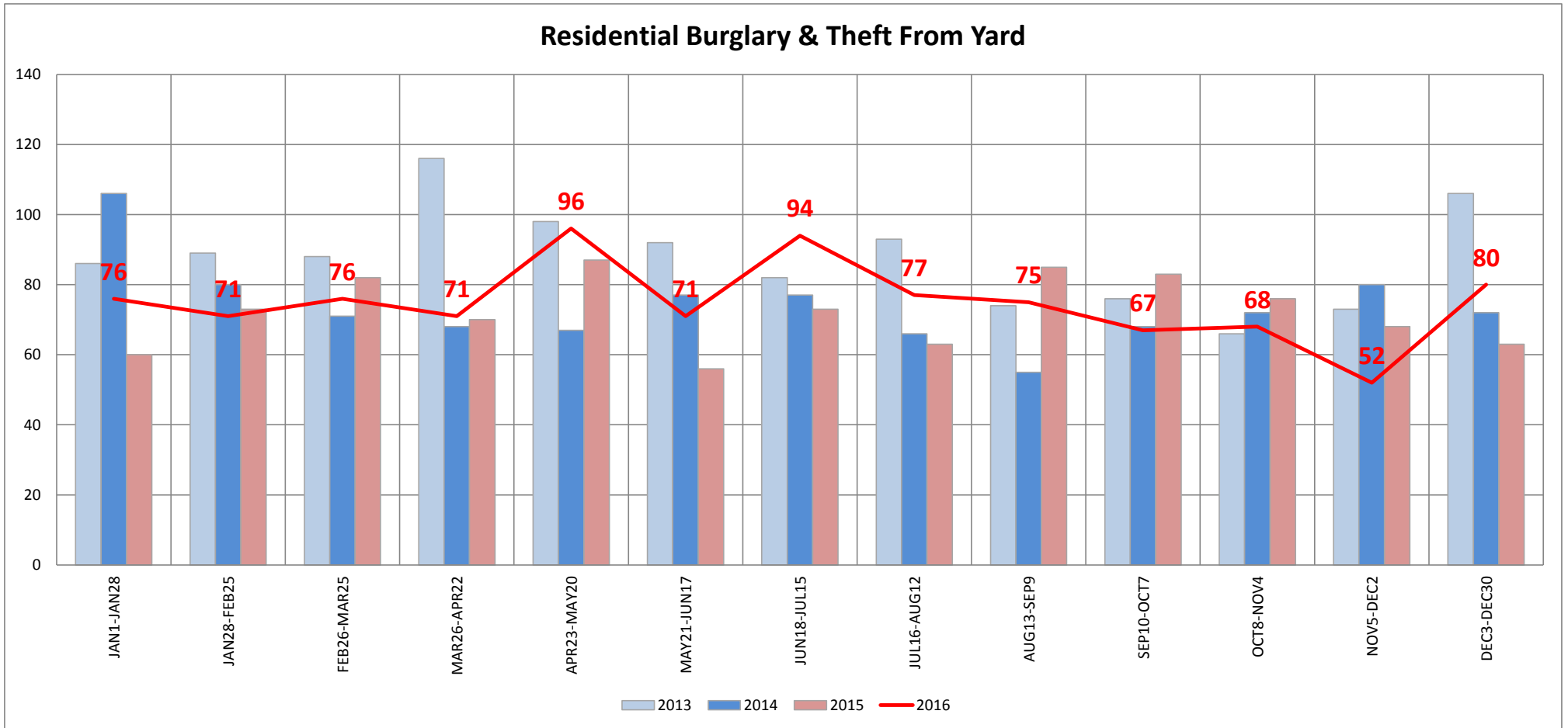
AVG	15.6	ACTION
+1 S.D.	20.7	Above this number = Action
		Trending Up = Action
		YTD above previous = Action

City of Tempe - Citywide Non-DV Aggravated Assault Trends



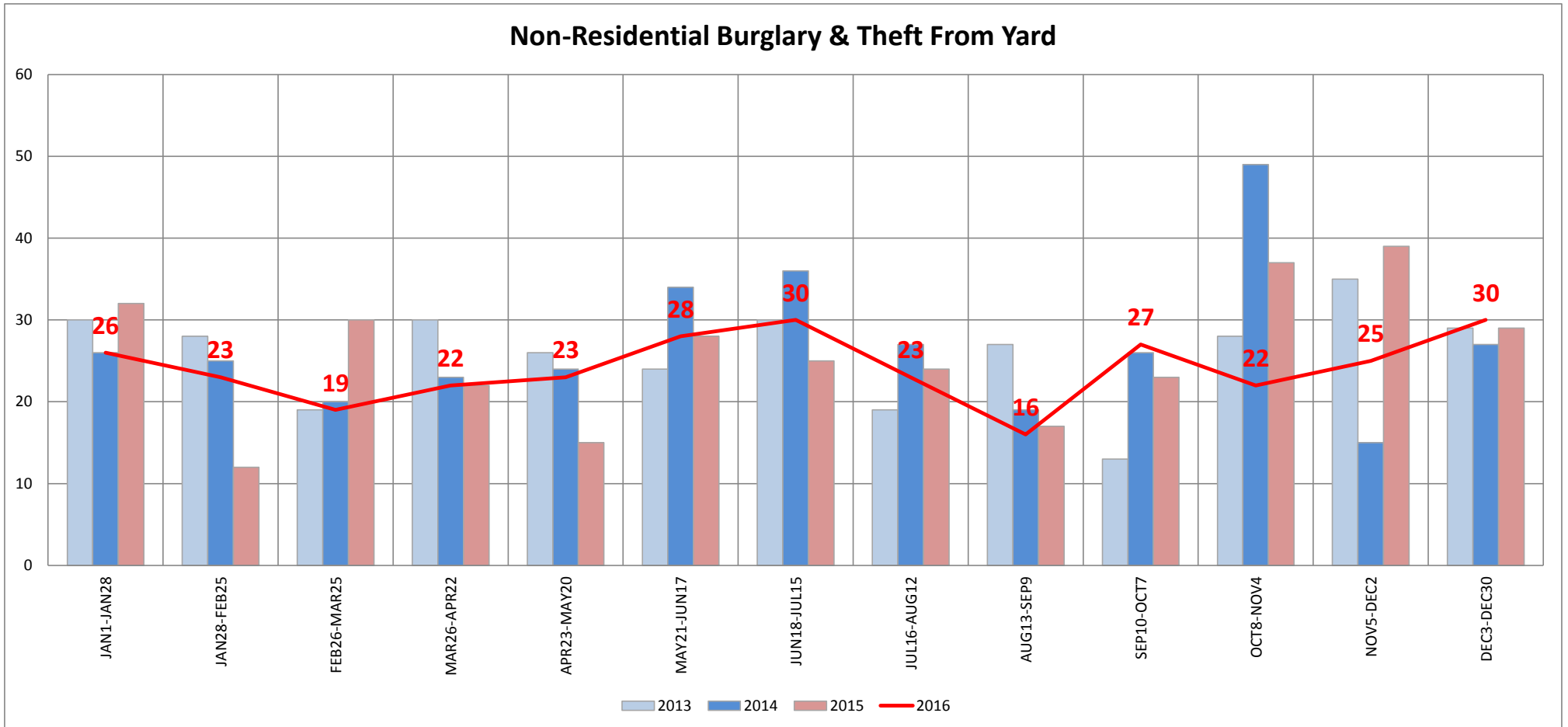
AVG	18.7	ACTION
+1 S.D.	23.5	Above this number = Action
		Trending Up = Action
		YTD above previous = Action

City of Tempe - Citywide Residential Burglary and Theft From Yard Trends



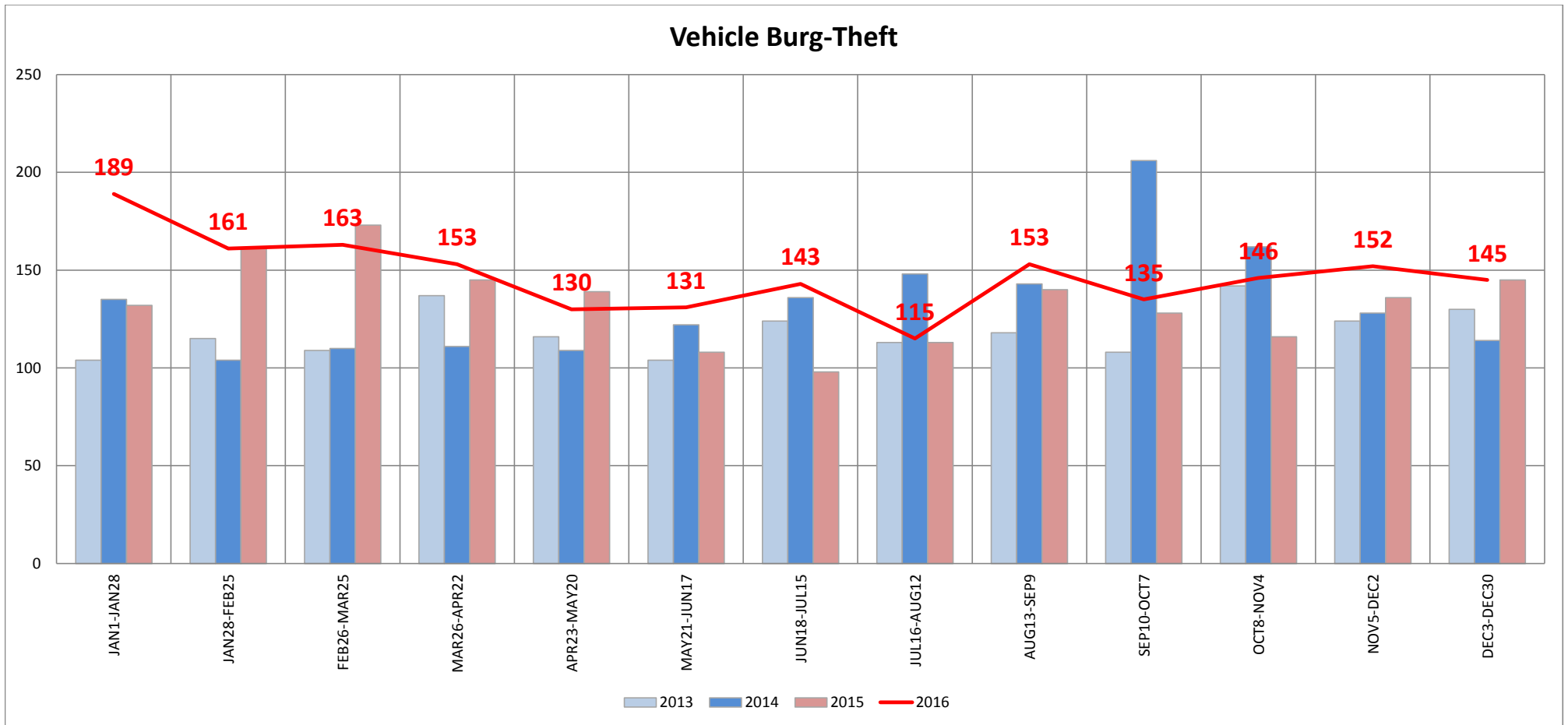
AVG	77.1	ACTION
+1 S.D.	90.1	Above this number = Action
		Trending Up = Action
		YTD above previous = Action

City of Tempe - Citywide Non-Residential Burglary and Theft From Yard Trends



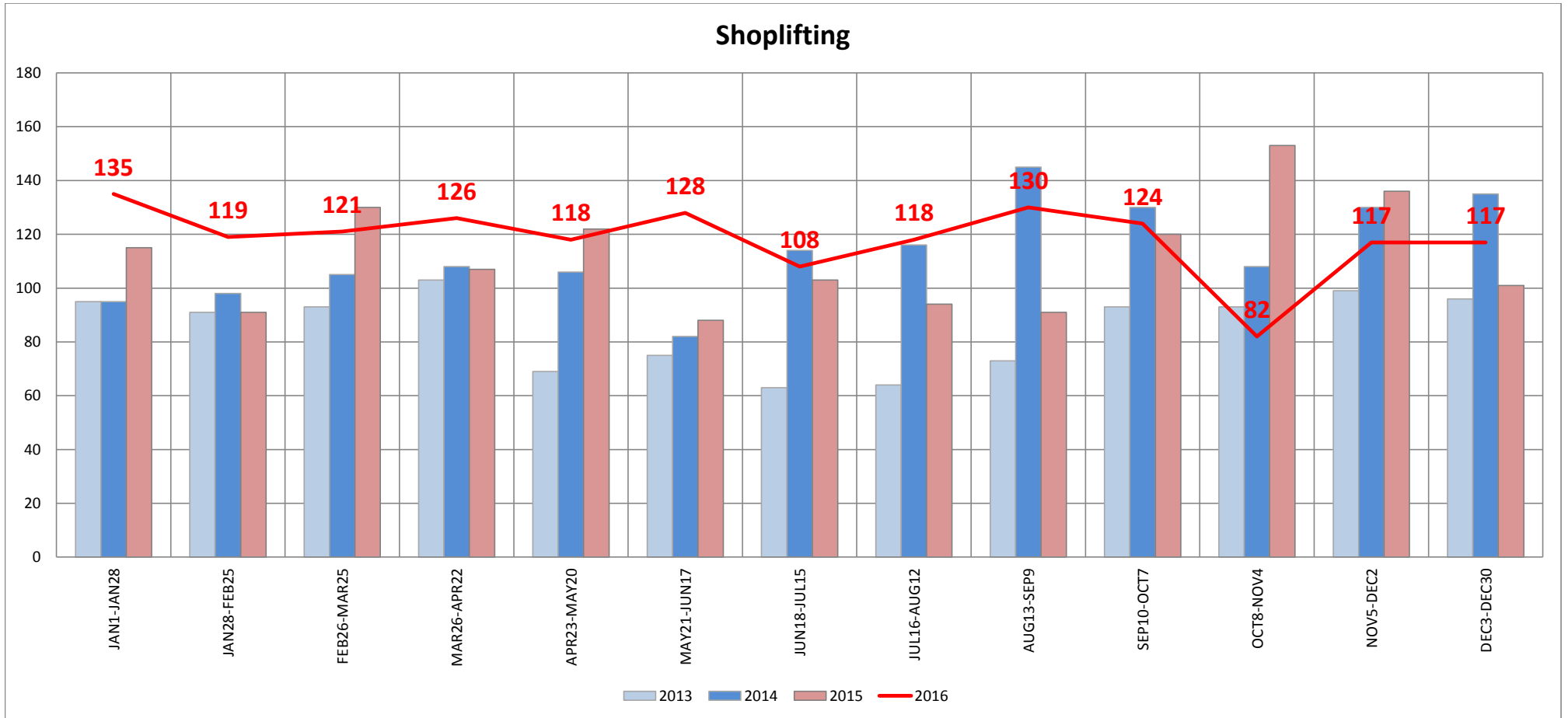
AVG	25.7	ACTION
+1 S.D.	32.4	Above this number = Action
		Trending Up = Action
		YTD above previous = Action

City of Tempe - Citywide Burglary and Theft From Vehicle Trends



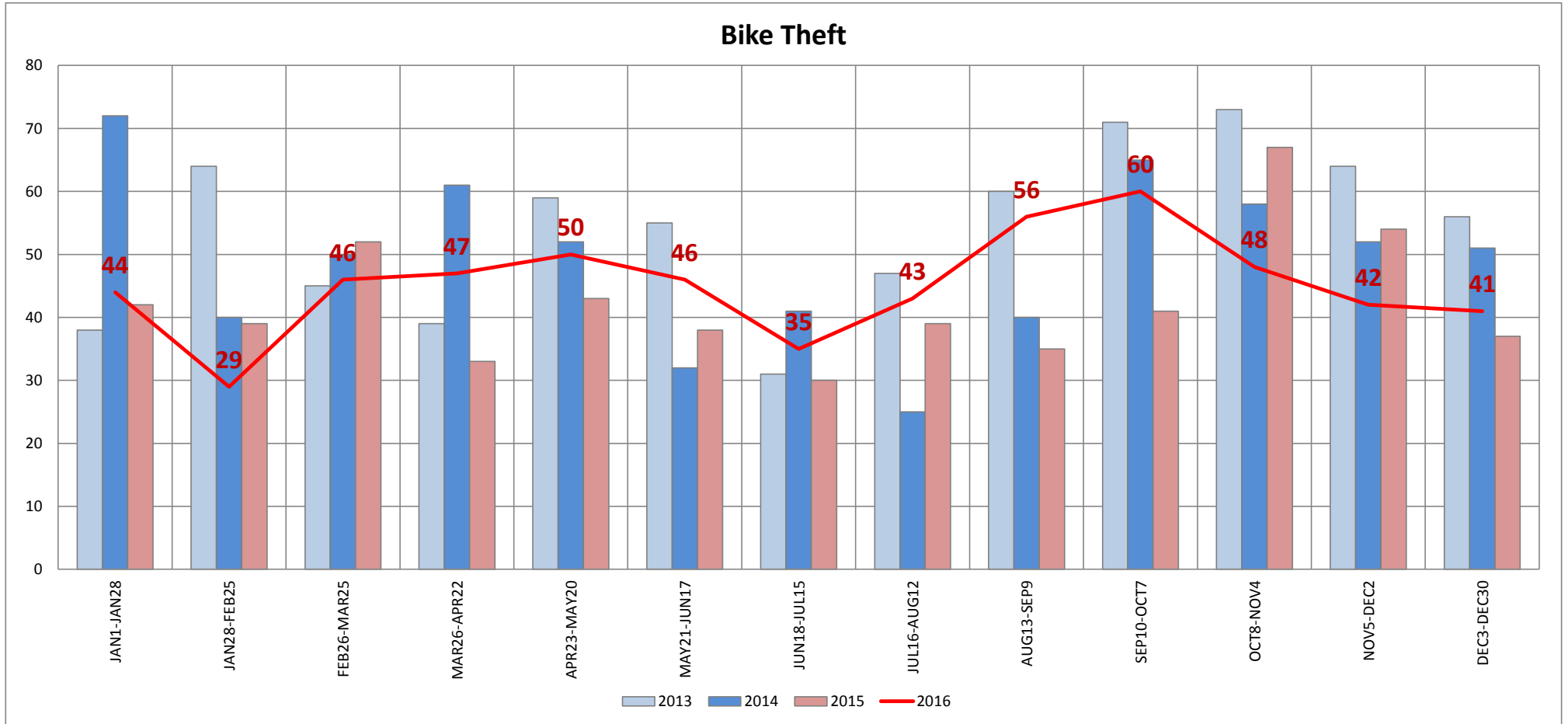
AVG	133.1	ACTION
+1 S.D.	155.4	Above this number = Action
		Trending Up = Action
		YTD above previous = Action

City of Tempe - Citywide Shoplift Trends



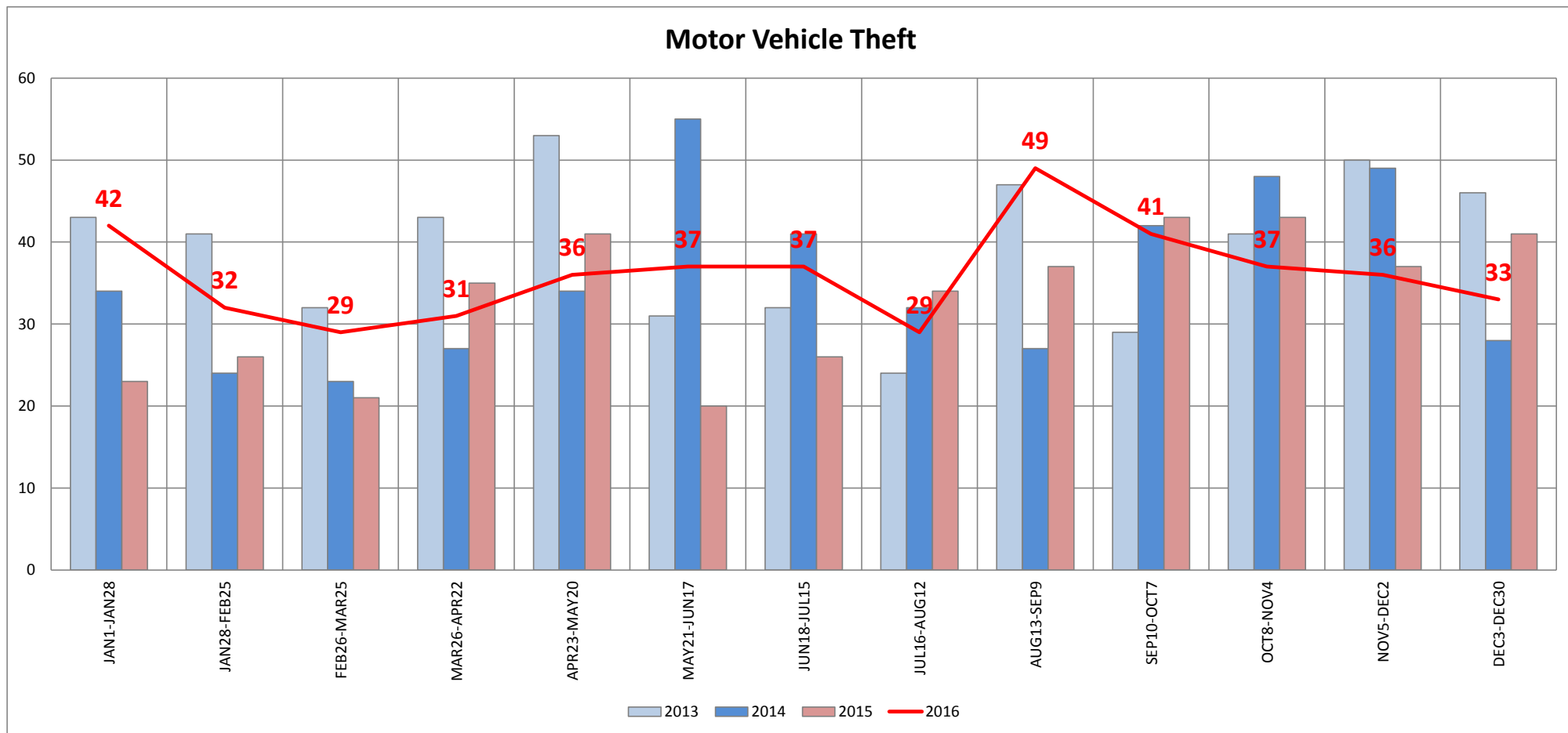
AVG	107.2	ACTION
+1 S.D.	127.6	Above this number = Action
		Trending Up = Action
		YTD above previous = Action

City of Tempe - Citywide Theft of Bicycle Trends



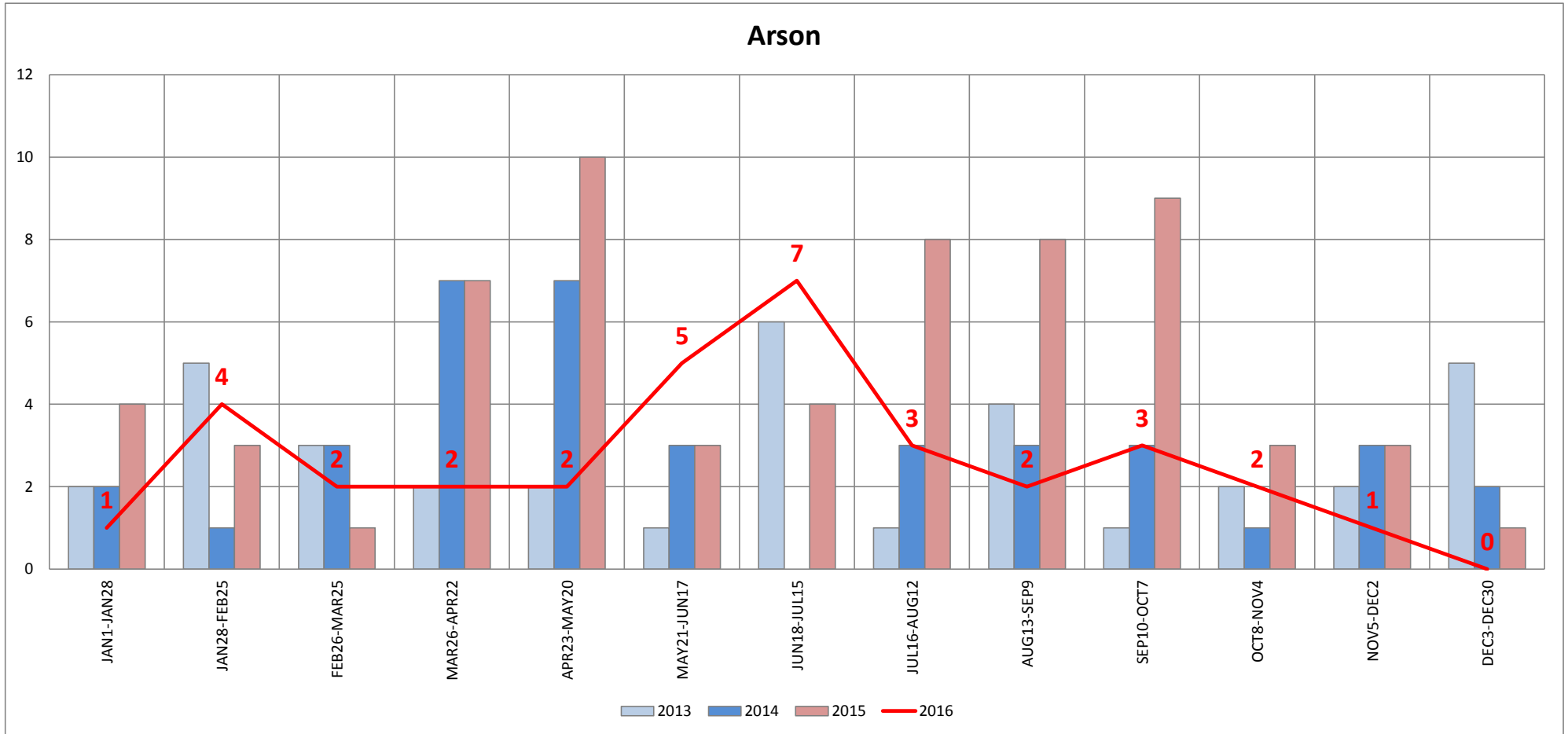
AVG	47.7	ACTION
+1 S.D.	59.4	Above this number = Action
		Trending Up = Action
		YTD above previous = Action

City of Tempe - Citywide Motor Vehicle Theft Trends



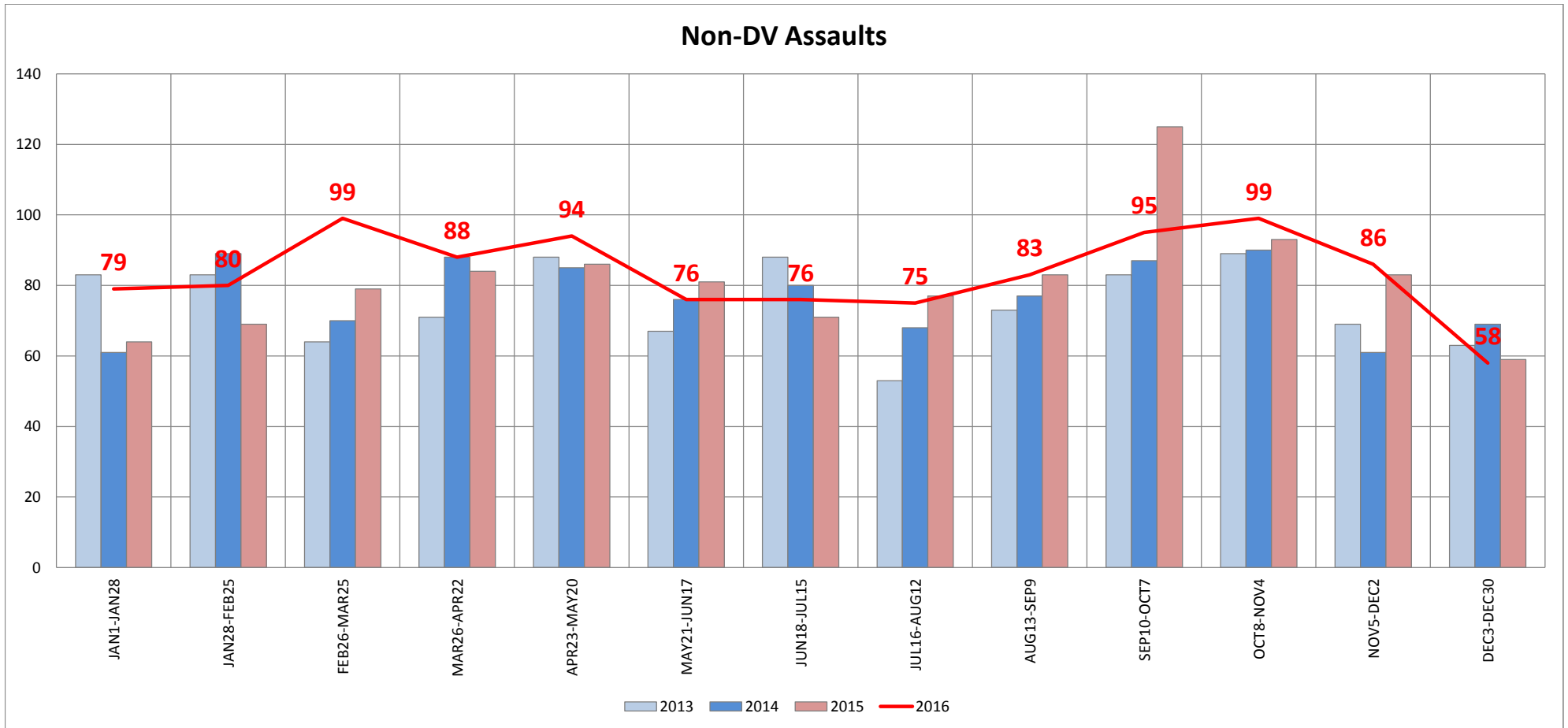
AVG	36.0	ACTION
+1 S.D.	44.5	Above this number = Action
		Trending Up = Action
		YTD above previous = Action

City of Tempe - Citywide Arson Trends



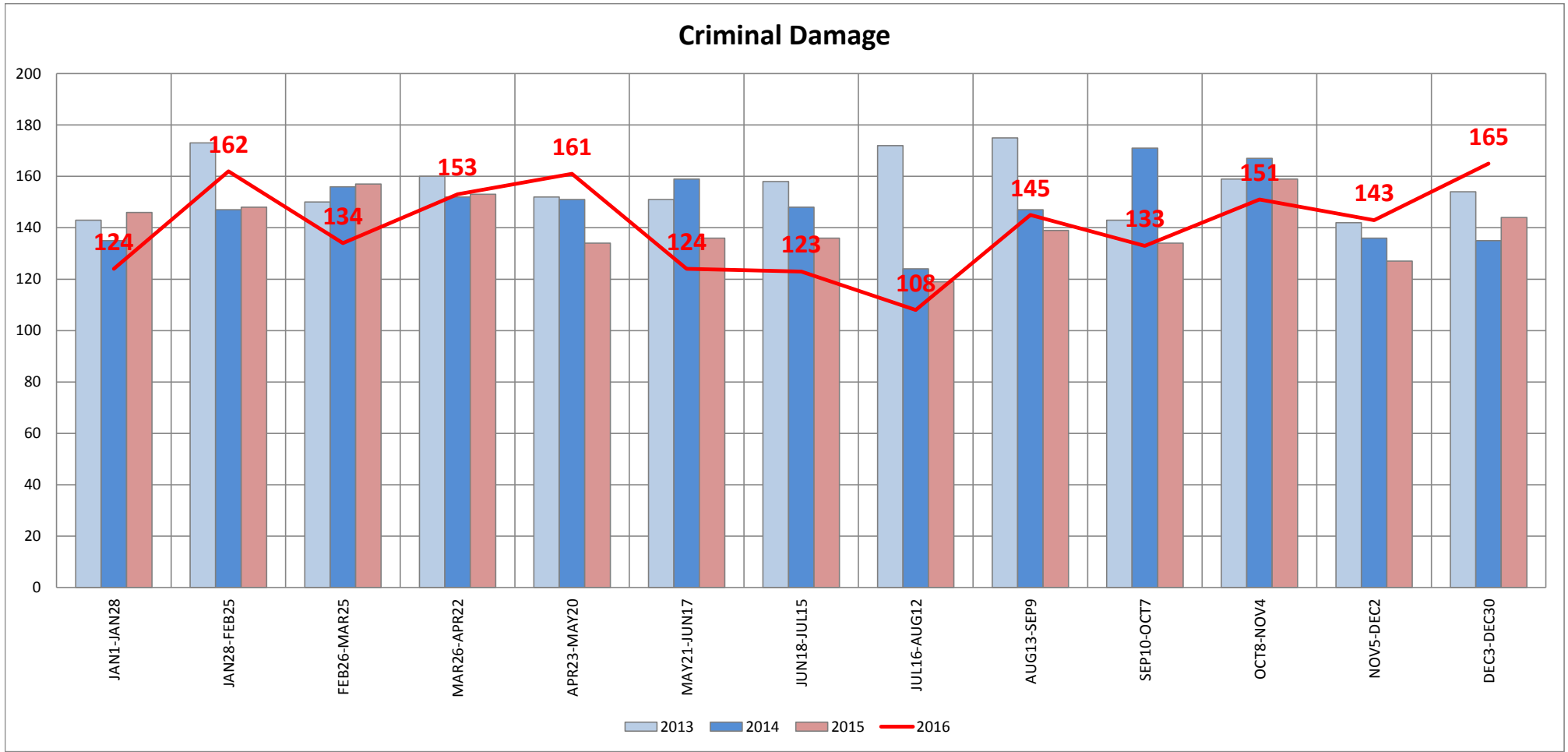
AVG	3.3	ACTION
+1 S.D.	5.6	Above this number = Action
		Trending Up = Action
		YTD above previous = Action

City of Tempe - Citywide Non-DV Assault Trends



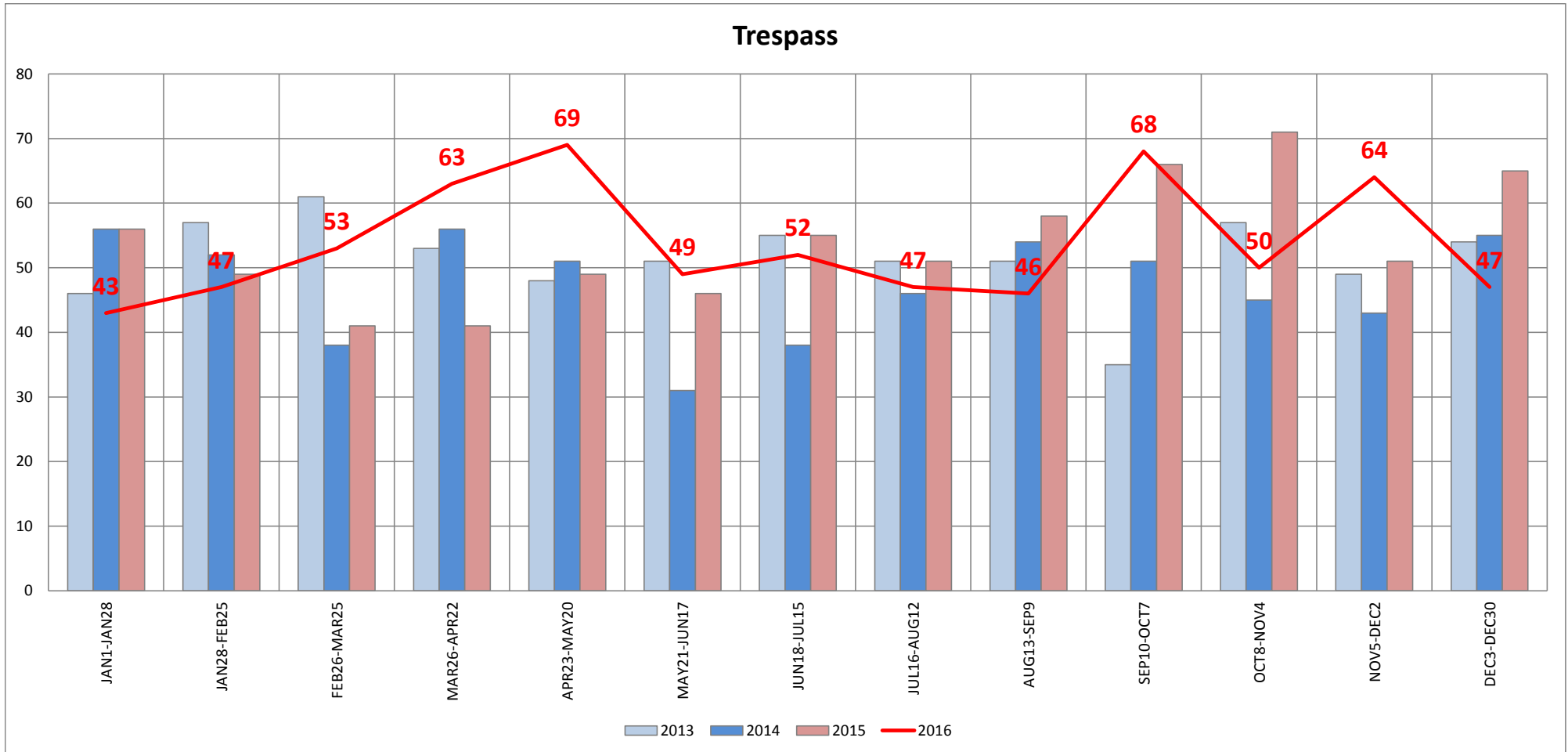
AVG	79.2	ACTION
+1 S.D.	91.8	Above this number = Action
		Trending Up = Action
		YTD above previous = Action

City of Tempe - Citywide Criminal Damage Trends



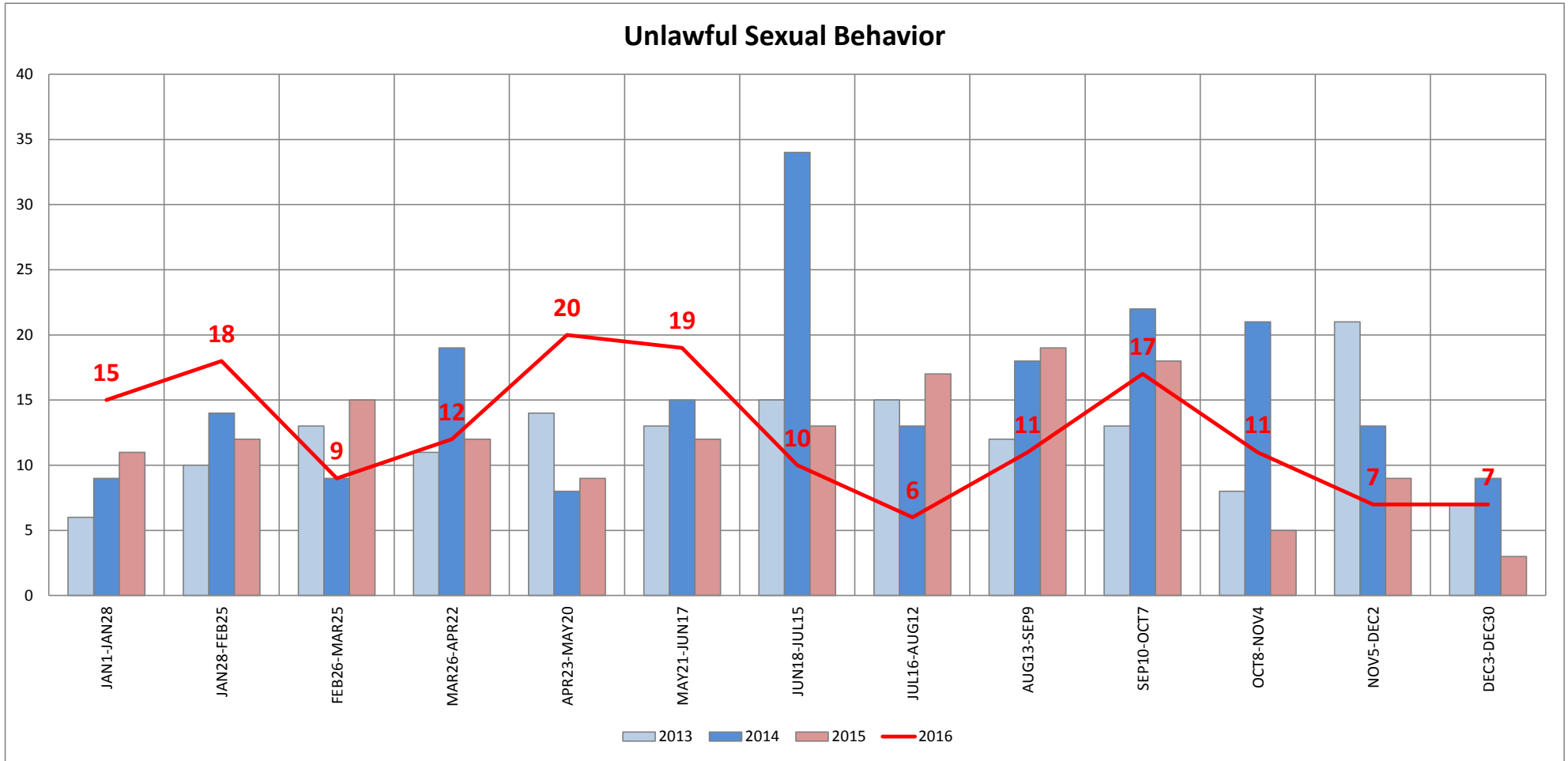
AVG	146.5	ACTION
+1 S.D.	161.2	Above this number = Action
		Trending Up = Action
		YTD above previous = Action

City of Tempe - Citywide Tresspass Trends



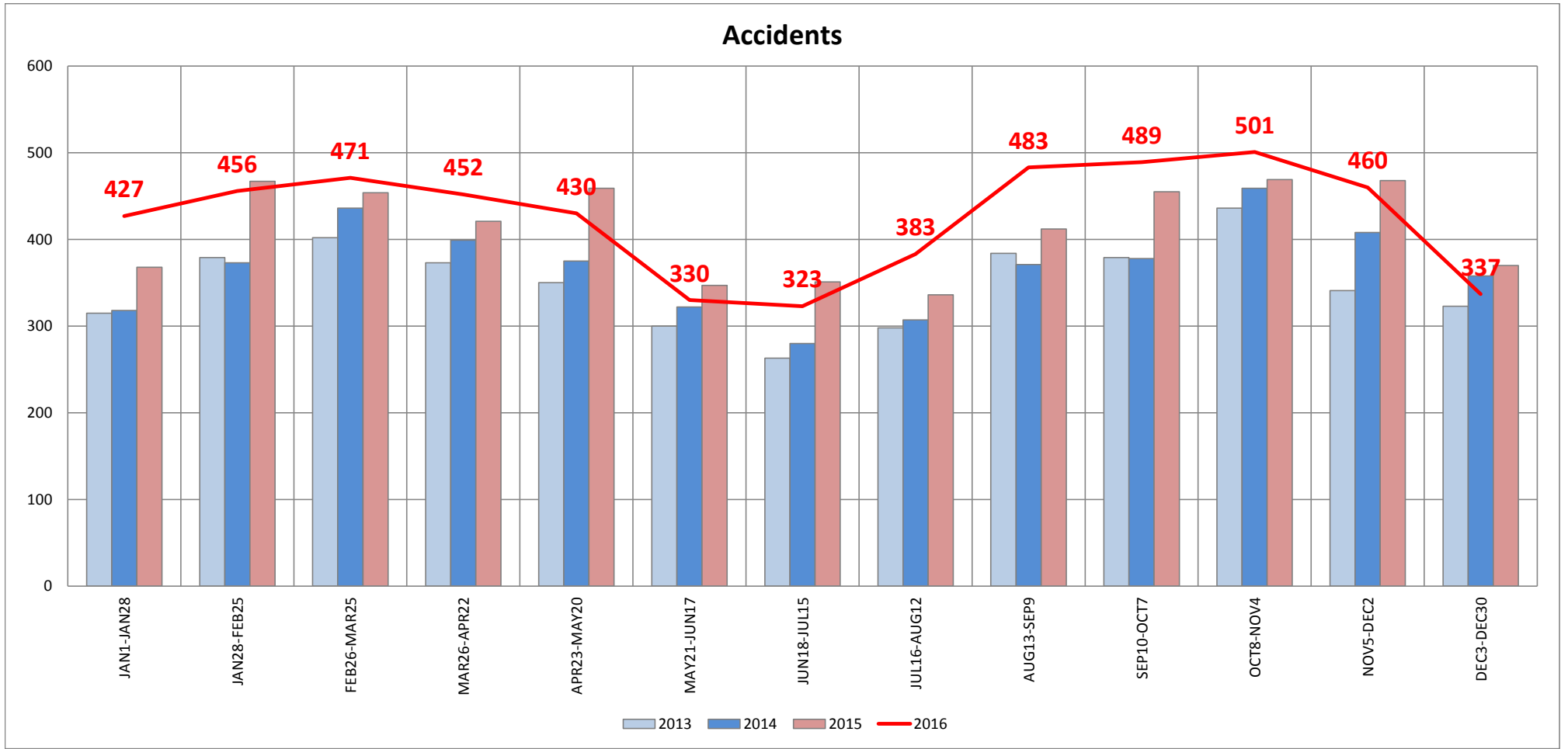
AVG	51.6	ACTION
+1 S.D.	59.9	Above this number = Action
		Trending Up = Action
		YTD above previous = Action

City of Tempe - Citywide Unlawful Sexual Behavior Incident Trends



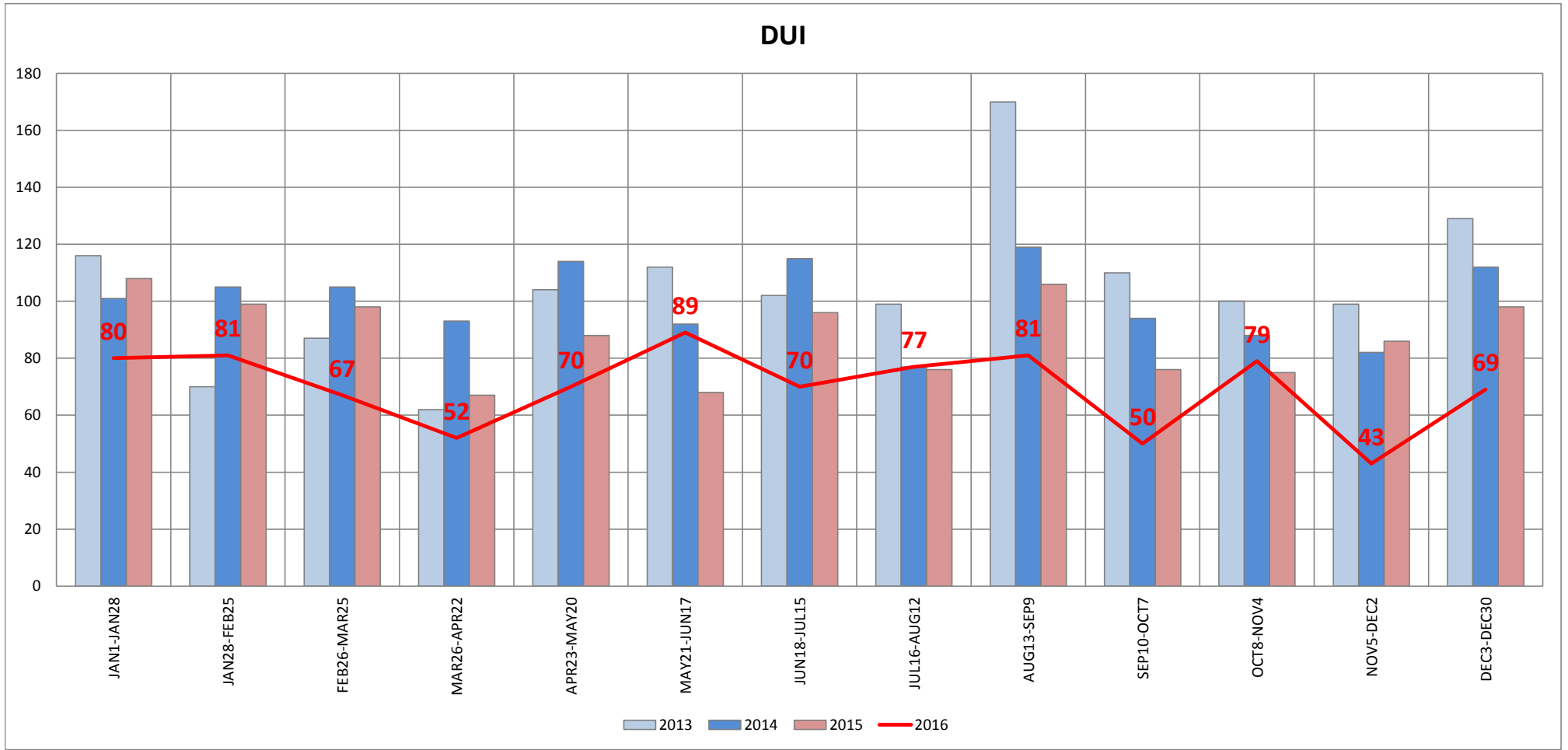
AVG	13.1	ACTION
+1 S.D.	18.4	Above this number = Action
		Trending Up = Action
		YTD above previous = Action

City of Tempe - Citywide Accident Trends



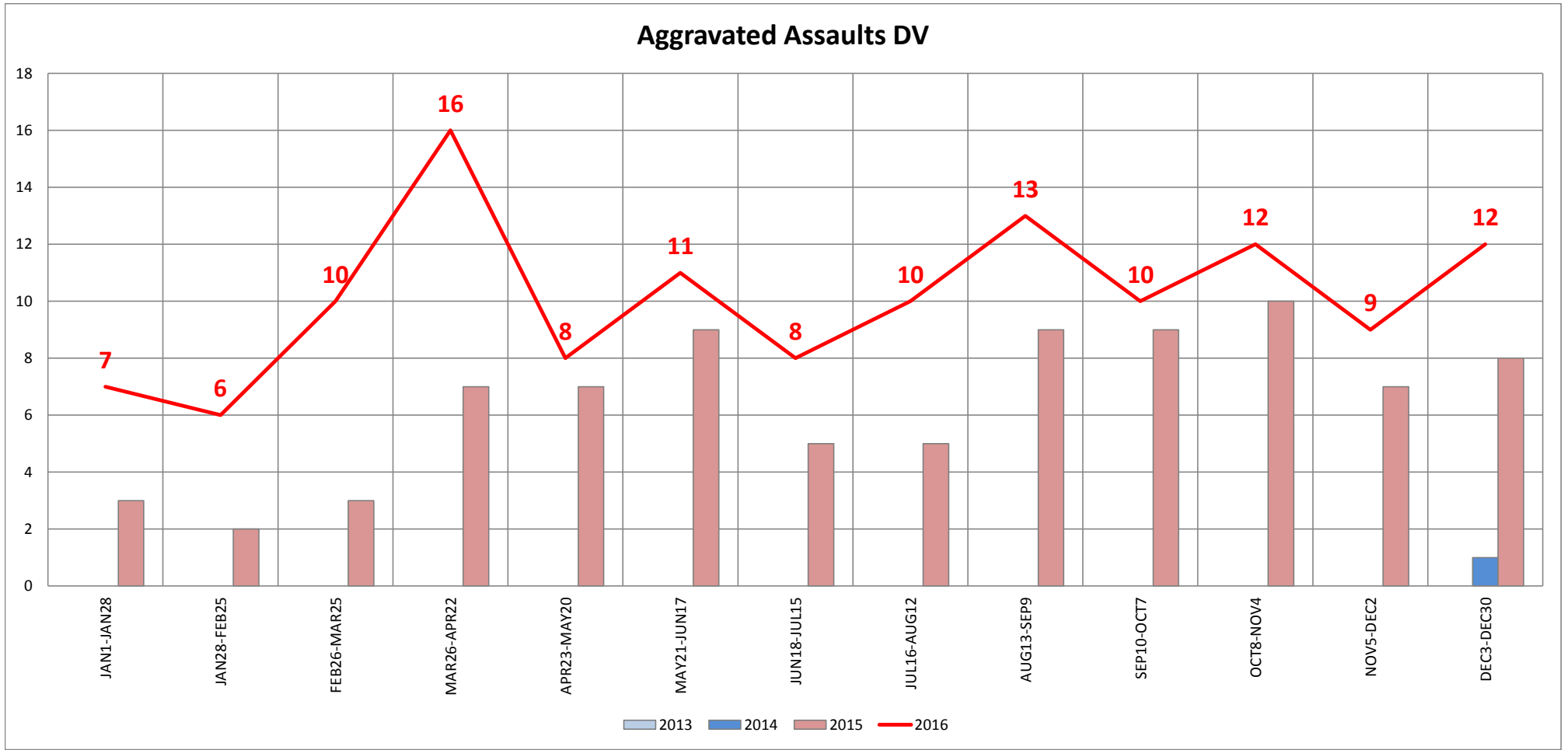
AVG	389.3	ACTION
+1 S.D.	450.1	Above this number = Action
		Trending Up = Action
		YTD above previous = Action

City of Tempe - Citywide DUI Trends



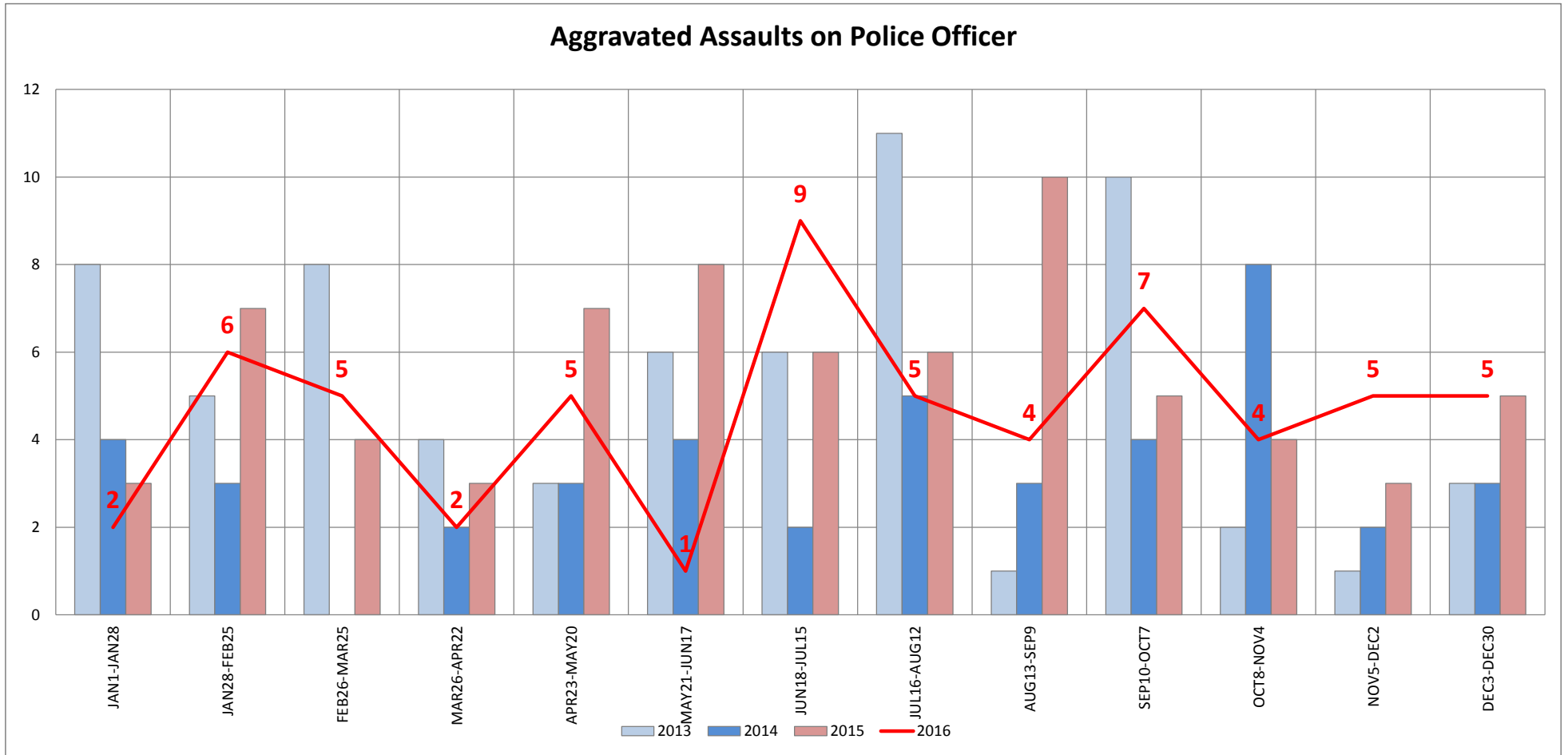
AVG	90.5	ACTION
+1 S.D.	112.3	Above this number = Action
		Trending Up = Action
		YTD above previous = Action

City of Tempe - Citywide Aggravated Assaults DV Trends



AVG	4.2	ACTION
+1 S.D.	8.9	Above this number = Action
		Trending Up = Action
		YTD above previous = Action

City of Tempe - Citywide Aggravated Assaults on Police Officer Trends



AVG	4.7	ACTION
+1 S.D.	7.2	Above this number = Action
		Trending Up = Action
		YTD above previous = Action